

ZONE	REV	DESCRIPTION	DATE	APP
A	1	ECR6722 INITIAL RELEASE	12/18/19	R. RAMDOSS
A1		UPDATED NOTE #5, M45 VOL-1-18	09/29/20	

生 效 日期
2021-09-14
受控文件

生 效 日期
2021-03-11
受控文件

生 效 日期
2021-03-11
受控文件

REVISED

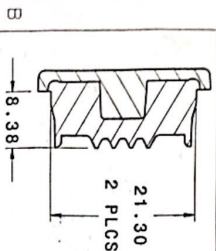
REVISIONS

1

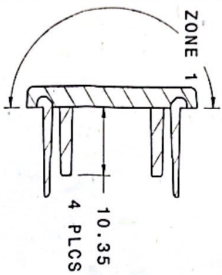
4

3

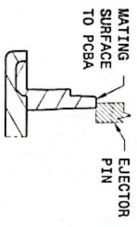
2



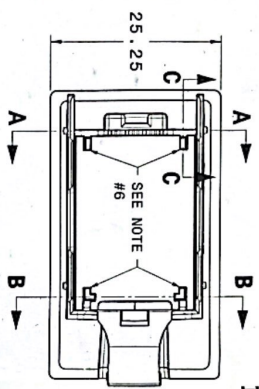
SECTION A-A



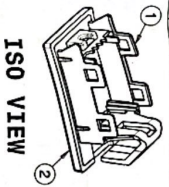
SECTION B-B



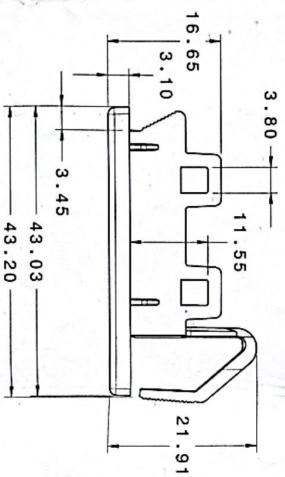
SECTION C-C



FRONT VIEW



ISO VIEW



BOTTOM VIEW

NOTES:

1. GATE VESTAGE OVER/UNDER FLUSH 0.3 MAX.
2. PIERCING TIME 0.25 SEC MAX.
3. EJECTOR PIN OVER/UNDER FLUSH 0.25 MAX.
4. NO SINKS OR UNDER FILL ALLOWED.
5. VDI-21 A-SURFACE FINISH (ZONE 1) OF THESE FEATURES.
6. EJECTOR PINS CAN ONLY COVER HALF OF THESE FEATURES. PIN LOCATION MUST BE APPROVED BY REBO ENGINEERING.

ITEM NO.	REV	DESCRIPTION	DATE	BY
1	1	PC - MAXIMUM 2407 TRANSPARENT 550115	11/23/19	XXX
2	1	BAR END T65 W/ 484, WHITE (EPISODE)	12/17/19	XXX

GENERAL SYMBOLS:
 ▲ MANUFACTURING CRITICAL
 △ CUSTOMER CRITICAL

rebo

LIGHTING & ELECTRONICS, LLC

COMPONENT DRAWING
 FCA PDUDE LAMP - LENS

DATE: 12/18/19	PROJECT: US	DRAWING NO.: 250135	REV: A
APPROVED BY: [Signature]	DESIGNED BY: [Signature]	CHECKED BY: [Signature]	DATE: 12/18/19
DATE: 12/18/19	PROJECT: US	DRAWING NO.: 250135	REV: A

MATERIAL	QTY	UNIT	DESCRIPTION
N/A	N/A	N/A	CUSTOMER P/N
N/A	N/A	N/A	REBO P/N
N/A	N/A	N/A	NEXT ASSY
N/A	N/A	N/A	USED ON

3D MODEL IS MASTER
 REF TO QDC, EXCEL DATA
 FOR 3D MODEL: 250135.DWG

