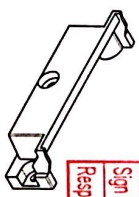


科德工业(中山)有限公司
 生效日期 2021-02-25
 受控文件

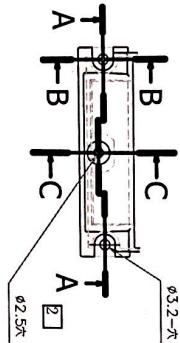


Kore Industries Zhongshan Co., Ltd.
 New Tooling 新模 Transfer Tooling 转模
 Modification 改模 Refer to 参考
 Remarks 备注:
 Sign & Date 签名日期: 李洪波 21.2.25
 Resp Dept 负责部门: QC PE 模具设计

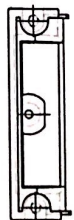
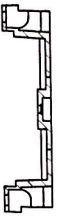


B-B (1:1)

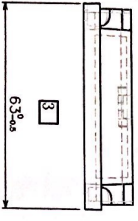
C-C (1:1)



A-A (1:1)



厚度规格加工公差尺寸表(±)				MIS-A--1005	
尺寸规格	公差	A级	B级	C级	
6*6*24 30*2T	0.1	0.2	0.4	0.4	
30*6*24 120*2T	0.2	0.4	0.8	0.8	
120*6*24 300*2T	0.4	0.8	2.0	2.0	
300*6*24 600*2T	0.8	2.0	4.0	4.0	
600*6*24 1200*2T	2.0	4.0	8.0	8.0	



NOTE: 1. 1個/台
 2. APPROVED: 山田 山田
 3. DRAWN: 山田 山田
 4. MATERIAL: ABS
 5. PART NAME: COVER(OIL TANK)
 6. CODE: GSM-Y50-OIL
 7. DATE: 17/01/30



扫描全能王 创建